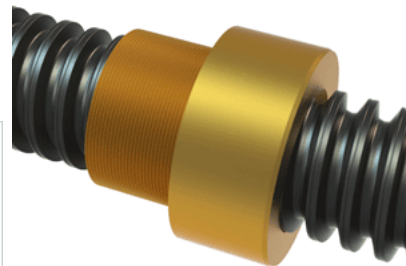


## PowerAC 2 1/4"-2 RA w/Bronze Nut

Call 800-321-7800 or visit us online at [www.nookindustries.com](http://www.nookindustries.com) to configure and order your PowerAC 2 1/4"-2 RA w/Bronze Nut today!



<b>Rolled Inch Acme Screw</b>	
<b>(Screw)Product Info</b>	
Screw Code	222-RA
Thread Direction	RH
Screw Material	4140 Series
<b>(Screw)Details</b>	
Lead [in]	0.500
Starts	1
Pitch [in]	0.500
Turns Per Inch	2
Threads per Inch	2
Thread Code	222
Form	40
End Code for Types 1,2,3,5 [* Journals may show tracings of the thread]	40
End Code for Type 4 [* Journals may show tracings of the thread]	24
<b>(Screw)Dimensions</b>	
A - Root Diameter Minimum [in]	1.684
D - Nominal Rod Diameter [in]	2.250
<b>(Screw)Part Numbers</b>	
3 ft. Part Number	11222
6 ft. Part Number	12222
12 ft. Part Number	13222
20 ft. Part Number	
<b>(Screw)Performance Specifications</b>	
Lead Accuracy +/- [in/in]	0.0003
<b>(Screw)Weight</b>	
Screw Weight [lb./ft.]	10.58
<b>Inch Acme Nut with Optional Flange</b>	
<b>(Nut)Product Info</b>	
Part Number	20222
Thread Direction	RH
Type	Bronze
<b>(Nut)Details</b>	
Lead [in]	0.500
Starts	1
Pitch [in]	0.500
Turns Per Inch	2
Lash (Maximum Axial) [in]	0.021
Nominal Rod Diameter [in]	2.250
Threads per Inch	2
Thread Code	222
Form	40
<b>(Nut)Dimensions</b>	
B [in]	3.06
C [in]	3.38
E [in]	1.56
F (n) Dia. [in]	(6) .656
F BCD [in]	4.380
G [in]	1.58
H [in]	5.38
J [in]	3.137-12
<b>(Nut)Forces and Torques</b>	
Torque to Raise 1 lb. [in-lb]	0.215
<b>(Nut)Flange Part Numbers</b>	
Flange No-Lash Part Number	73540
Flange Part Number	FLG7574
<b>(Nut)Weight</b>	
Flange Weight [lb]	9.88
Nut Weight [lb]	5.25
<b>(Nut)Performance Specifications</b>	
Efficiency [%]	37

Lead Accuracy +/- [in/in]	0.0003
Dynamic Load Capacity [lb]	25312
Static Load Capacity [lb]	81000