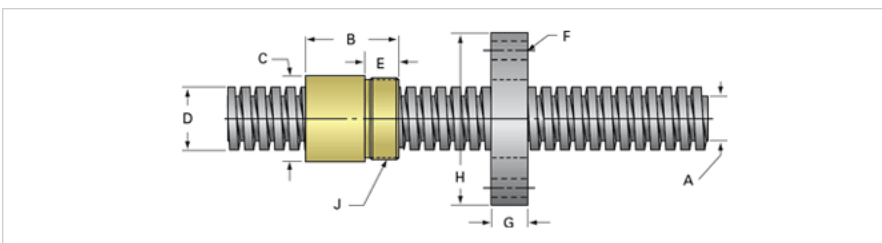
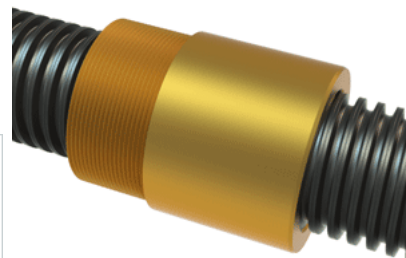


## PowerAC 2 1/2"-3 RA w/Bronze Nut

Call 800-321-7800 or visit us online at [www.nookindustries.com](http://www.nookindustries.com) to configure and order your PowerAC 2 1/2"-3 RA w/Bronze Nut today!



<b>Rolled Inch Acme Screw</b>	
<b>(Screw)Product Info</b>	
Screw Code	253-RA
Thread Direction	RH
Screw Material	4140 Series
<b>(Screw)Details</b>	
Lead [in]	0.333
Starts	1
Pitch [in]	0.333
Turns Per Inch	3
Threads per Inch	3
Thread Code	253
Form	2C
End Code for Types 1,2,3,5 [* Journals may show tracings of the thread]	50
End Code for Type 4 [* Journals may show tracings of the thread]	32
<b>(Screw)Dimensions</b>	
A - Root Diameter Minimum [in]	2.106
D - Nominal Rod Diameter [in]	2.500
<b>(Screw)Part Numbers</b>	
3 ft. Part Number	11253
6 ft. Part Number	12253
12 ft. Part Number	13253
20 ft. Part Number	
<b>(Screw)Performance Specifications</b>	
Lead Accuracy +/- [in/in]	0.0003
<b>(Screw)Weight</b>	
Screw Weight [lb./ft.]	14.38
<b>Inch Acme Nut with Optional Flange</b>	
<b>(Nut)Product Info</b>	
Part Number	20253
Thread Direction	RH
Type	Bronze
<b>(Nut)Details</b>	
Lead [in]	0.333
Starts	1
Pitch [in]	0.333
Turns Per Inch	3
Lash (Maximum Axial) [in]	0.013
Nominal Rod Diameter [in]	2.500
Threads per Inch	3
Thread Code	253
Form	2C
<b>(Nut)Dimensions</b>	
B [in]	4.25
C [in]	3.38
E [in]	1.56
F (n) Dia. [in]	(6) .656
F BCD [in]	4.380
G [in]	1.58
H [in]	5.38
J [in]	3.137-12
<b>(Nut)Forces and Torques</b>	
Torque to Raise 1 lb. [in-lb]	0.212
<b>(Nut)Flange Part Numbers</b>	
Flange No-Lash Part Number	73540
Flange Part Number	FLG7574
<b>(Nut)Weight</b>	
Flange Weight [lb]	9.88
Nut Weight [lb]	5.91
<b>(Nut)Performance Specifications</b>	
Efficiency [%]	25

Lead Accuracy +/- [in/in]	0.0003
Dynamic Load Capacity [lb]	31250
Static Load Capacity [lb]	100000