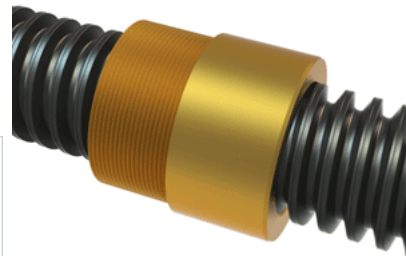


PowerAC 2 1/2"-2 RA w/Bronze Nut

Call 800-321-7800 or visit us online at www.nookindustries.com to configure and order your PowerAC 2 1/2"-2 RA w/Bronze Nut today!



Rolled Inch Acme Screw

(Screw)Product Info

Screw Code	252-RA
Thread Direction	RH
Screw Material	4140 Series

(Screw)Details

Lead [in]	0.500
Starts	1
Pitch [in]	0.500
Turns Per Inch	2
Threads per Inch	2
Thread Code	252
Form	40
End Code for Types 1,2,3,5 [* Journals may show tracings of the thread]	45
End Code for Type 4 [* Journals may show tracings of the thread]	28

(Screw)Dimensions

A - Root Diameter Minimum [in]	1.908
D - Nominal Rod Diameter [in]	2.500

(Screw)Part Numbers

3 ft. Part Number	11252
6 ft. Part Number	12252
12 ft. Part Number	13252
20 ft. Part Number	

(Screw)Performance Specifications

Lead Accuracy +/- [in/in]	0.0003
---------------------------	--------

(Screw)Weight

Screw Weight [lb./ft.]	13.41
------------------------	-------

Inch Acme Nut with Optional Flange

(Nut)Product Info

Part Number	20252
Thread Direction	RH
Type	Bronze

(Nut)Details

Lead [in]	0.500
Starts	1
Pitch [in]	0.500
Turns Per Inch	2
Lash (Maximum Axial) [in]	0.012
Nominal Rod Diameter [in]	2.500
Threads per Inch	2
Thread Code	252
Form	40

(Nut)Dimensions

B [in]	3.38
C [in]	3.38
E [in]	1.56
F (n) Dia. [in]	(6) .656
F BCD [in]	4.380
G [in]	1.58
H [in]	5.38
J [in]	3.137-12

(Nut)Forces and Torques

Torque to Raise 1 lb. [in-lb]	0.234
-------------------------------	-------

(Nut)Flange Part Numbers

Flange No-Lash Part Number	73540
Flange Part Number	FLG7574

(Nut)Weight

Flange Weight [lb]	9.88
Nut Weight [lb]	5.00

(Nut)Performance Specifications

Efficiency [%]	34
----------------	----

Lead Accuracy +/- [in/in]	0.0003
Dynamic Load Capacity [lb]	31250
Static Load Capacity [lb]	100000