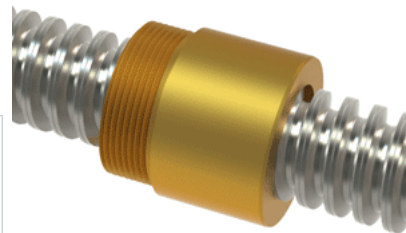


PowerAC 1"-4 RS w/Bronze Nut

Call 800-321-7800 or visit us online at www.nookindustries.com to configure and order your PowerAC 1"-4 RS w/Bronze Nut today!



Rolled Inch Acme Screw

(Screw)Product Info

Screw Code	104-RS
Thread Direction	RH
Screw Material	300 Series Stainless

(Screw)Details

Lead [in]	0.250
Starts	1
Pitch [in]	0.250
Turns Per Inch	4
Threads per Inch	4
Thread Code	104
Form	2C
End Code for Types 1,2,3,5 [* Journals may show tracings of the thread]	17
End Code for Type 4 [* Journals may show tracings of the thread]	10

(Screw)Dimensions

A - Root Diameter Minimum [in]	0.698
D - Nominal Rod Diameter [in]	1.000

(Screw)Part Numbers

3 ft. Part Number	91104
6 ft. Part Number	92104
12 ft. Part Number	93104
20 ft. Part Number	

(Screw)Performance Specifications

Lead Accuracy +/- [in/in]	0.0003
---------------------------	--------

(Screw)Weight

Screw Weight [lb./ft.]	2.22
------------------------	------

Inch Acme Nut with Optional Flange

(Nut)Product Info

Part Number	20104
Thread Direction	RH
Type	Bronze

(Nut)Details

Lead [in]	0.250
Starts	1
Pitch [in]	0.250
Turns Per Inch	4
Lash (Maximum Axial) [in]	0.010
Nominal Rod Diameter [in]	1.000
Threads per Inch	4
Thread Code	104
Form	2C

(Nut)Dimensions

B [in]	1.50
C [in]	1.50
E [in]	0.50
F (n) Dia. [in]	(4) .266
F BCD [in]	2.260
G [in]	0.52
H [in]	2.76
J [in]	1.375-16

(Nut)Forces and Torques

Torque to Raise 1 lb. [in-lb]	0.105
-------------------------------	-------

(Nut)Flange Part Numbers

Flange No-Lash Part Number	73275
Flange Part Number	FLG8281

(Nut)Weight

Flange Weight [lb]	0.85
Nut Weight [lb]	0.52

(Nut)Performance Specifications

Efficiency [%]	38
----------------	----

Lead Accuracy +/- [in/in]	0.0003
Dynamic Load Capacity [lb]	5000
Static Load Capacity [lb]	16000