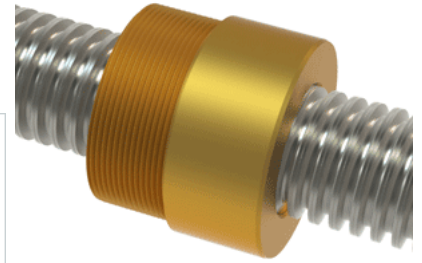


## PowerAC 1"-10 LS w/Bronze Nut

Call 800-321-7800 or visit us online at [www.nookindustries.com](http://www.nookindustries.com) to configure and order your PowerAC 1"-10 LS w/Bronze Nut today!



### Rolled Inch Acme Screw

#### (Screw)Product Info

Screw Code	110-LS
Thread Direction	LH
Screw Material	300 Series Stainless

#### (Screw)Details

Lead [in]	0.100
Starts	1
Pitch [in]	0.100
Turns Per Inch	10
Threads per Inch	10
Thread Code	110
Form	2C
End Code for Types 1,2,3,5 [* Journals may show tracings of the thread]	20
End Code for Type 4 [* Journals may show tracings of the thread]	12

#### (Screw)Dimensions

A - Root Diameter Minimum [in]	0.857
D - Nominal Rod Diameter [in]	1.000

#### (Screw)Part Numbers

3 ft. Part Number	94110
6 ft. Part Number	95110
12 ft. Part Number	96110
20 ft. Part Number	

#### (Screw)Performance Specifications

Lead Accuracy +/- [in/in]	0.0003
---------------------------	--------

#### (Screw)Weight

Screw Weight [lb./ft.]	2.10
------------------------	------

### Inch Acme Nut with Optional Flange

#### (Nut)Product Info

Part Number	80110
Thread Direction	LH
Type	Bronze

#### (Nut)Details

Lead [in]	0.100
Starts	1
Pitch [in]	0.100
Turns Per Inch	10
Lash (Maximum Axial) [in]	0.008
Nominal Rod Diameter [in]	1.000
Threads per Inch	10
Thread Code	110
Form	2C

#### (Nut)Dimensions

B [in]	1.50
C [in]	1.50
E [in]	0.50
F (n) Dia. [in]	(4) .266
F BCD [in]	2.260
G [in]	0.52
H [in]	2.76
J [in]	1.375-16

#### (Nut)Forces and Torques

Torque to Raise 1 lb. [in-lb]	0.078
-------------------------------	-------

#### (Nut)Flange Part Numbers

Flange No-Lash Part Number	73275
Flange Part Number	FLG8281

#### (Nut)Weight

Flange Weight [lb]	0.85
Nut Weight [lb]	0.47

#### (Nut)Performance Specifications

Efficiency [%]	20
----------------	----

Lead Accuracy +/- [in/in]	0.0003
Dynamic Load Capacity [lb]	5000
Static Load Capacity [lb]	16000