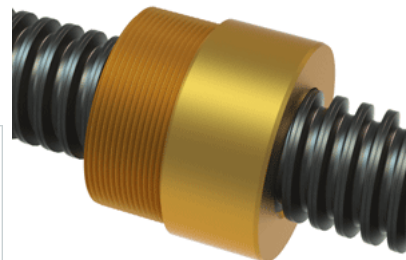
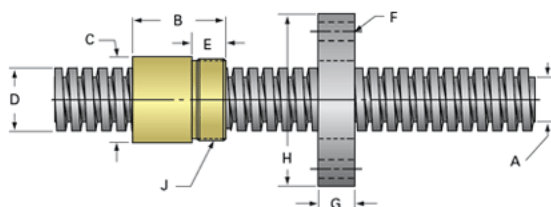


## PowerAC 1 1/4"-5 RA w/Bronze Nut

Call 800-321-7800 or visit us online at [www.nookindustries.com](http://www.nookindustries.com) to configure and order your PowerAC 1 1/4"-5 RA w/Bronze Nut today!



### Rolled Inch Acme Screw

#### (Screw)Product Info

Screw Code	125-RA
Thread Direction	RH
Screw Material	4140 Series

#### (Screw)Details

Lead [in]	0.200
Starts	1
Pitch [in]	0.200
Turns Per Inch	5
Threads per Inch	5
Thread Code	125
Form	2C
End Code for Types 1,2,3,5 [* Journals may show tracings of the thread]	25
End Code for Type 4 [* Journals may show tracings of the thread]	16

#### (Screw)Dimensions

A - Root Diameter Minimum [in]	0.999
D - Nominal Rod Diameter [in]	1.250

#### (Screw)Part Numbers

3 ft. Part Number	11125
6 ft. Part Number	12125
12 ft. Part Number	13125
20 ft. Part Number	

#### (Screw)Performance Specifications

Lead Accuracy +/- [in/in]	0.0003
---------------------------	--------

#### (Screw)Weight

Screw Weight [lb./ft.]	3.49
------------------------	------

### Inch Acme Nut with Optional Flange

#### (Nut)Product Info

Part Number	20125
Thread Direction	RH
Type	Bronze

#### (Nut)Details

Lead [in]	0.200
Starts	1
Pitch [in]	0.200
Turns Per Inch	5
Lash (Maximum Axial) [in]	0.010
Nominal Rod Diameter [in]	1.250
Threads per Inch	5
Thread Code	125
Form	2C

#### (Nut)Dimensions

B [in]	1.75
C [in]	2.13
E [in]	0.81
F (n) Dia. [in]	(4) .397
F BCD [in]	3.440
G [in]	0.83
H [in]	4.20
J [in]	1.967-18

#### (Nut)Forces and Torques

Torque to Raise 1 lb. [in-lb]	0.114
-------------------------------	-------

#### (Nut)Flange Part Numbers

Flange No-Lash Part Number	73420
Flange Part Number	FLG7572

#### (Nut)Weight

Flange Weight [lb]	3.19
Nut Weight [lb]	1.29

#### (Nut)Performance Specifications

Efficiency [%]	28
----------------	----

Lead Accuracy +/- [in/in]	0.0003
Dynamic Load Capacity [lb]	7812
Static Load Capacity [lb]	25000