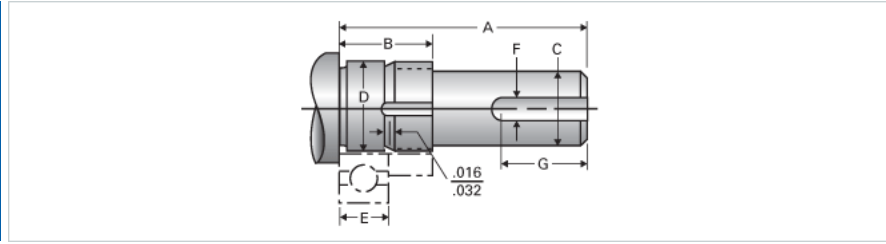
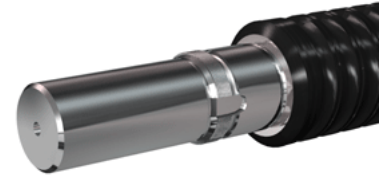


Type 1L, End Code 105

Call 800-321-7800 or visit us online at www.nookindustries.com to configure and order your Type 1L, End Code 105 today!



| Product Info | |
|---|-----------------|
| Nominal Bearing Journal Size | 105 |
| Dimensions | |
| C [in] | 4.000 / 3.999 |
| D [in] | 4.1345 / 4.1338 |
| F [in] | 1.000 |
| G [in] | 6.75 |
| Typical Journal for Single Bearing A [in] | 10.84 |
| Typical Journal for Single Bearing B [in] | 2.84 |
| Typical Journal for Single Bearing E [in] | 1.929 |
| Lock Nut | AN-21 |
| Lock Washer | W-21 |