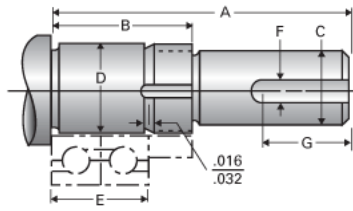


## Type 2L, End Code 105

Call 800-321-7800 or visit us online at [www.nookindustries.com](http://www.nookindustries.com) to configure and order your Type 2L, End Code 105 today!



### Product Info

Nominal Bearing Journal Size 105

### Dimensions

C Maximum [in]	4.000
C Minimum [in]	3.999
D Maximum [in]	4.1345
D Minimum [in]	4.1338
F [in]	N/A
G [in]	N/A
Typical Journal for Single Bearing A [in]	12.76
Typical Journal for Single Bearing B [in]	4.76
Typical Journal for Single Bearing E [in]	3.858
Lock Nut	AN-21
Lock Washer	W-21