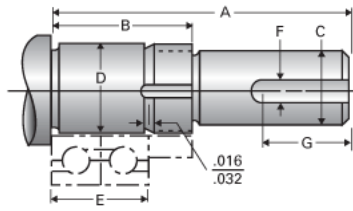


Type 2L, End Code 80

Call 800-321-7800 or visit us online at www.nookindustries.com to configure and order your Type 2L, End Code 80 today!



Product Info

Nominal Bearing Journal Size 80

Dimensions

C Maximum [in]	3.000
C Minimum [in]	2.998
D Maximum [in]	3.1501
D Minimum [in]	3.1495
F [in]	N/A
G [in]	N/A
Typical Journal for Single Bearing A [in]	8.49
Typical Journal for Single Bearing B [in]	3.80
Typical Journal for Single Bearing E [in]	3.070
Lock Nut	AN-16
Lock Washer	W-16