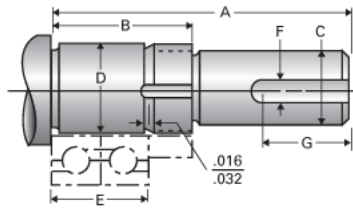


## Type 2L, End Code 35

Call 800-321-7800 or visit us online at [www.nookindustries.com](http://www.nookindustries.com) to configure and order your Type 2L, End Code 35 today!



### Product Info

Nominal Bearing Journal Size 35

### Dimensions

C Maximum [in]	1.250
C Minimum [in]	1.249
D Maximum [in]	1.3784
D Minimum [in]	1.3779
F [in]	N/A
G [in]	N/A
Typical Journal for Single Bearing A [in]	4.00
Typical Journal for Single Bearing B [in]	1.90
Typical Journal for Single Bearing E [in]	1.338
Lock Nut	N-07
Lock Washer	W-07