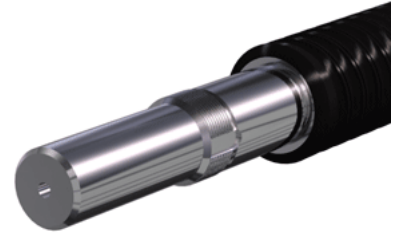
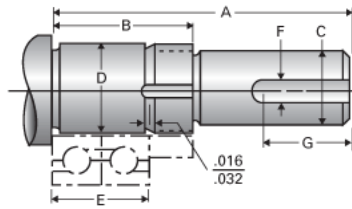


Type 2L, End Code 6

Call 800-321-7800 or visit us online at www.nookindustries.com to configure and order your Type 2L, End Code 6 today!



Product Info

Nominal Bearing Journal Size 6

Dimensions

C Maximum [in]	0.125
C Minimum [in]	0.124
D Maximum [in]	0.2363
D Minimum [in]	0.2363
F [in]	N/A
G [in]	N/A
Typical Journal for Single Bearing A [in]	1.09
Typical Journal for Single Bearing B [in]	0.78
Typical Journal for Single Bearing E [in]	0.472
Lock Nut	#10-32
Lock Washer	N/A