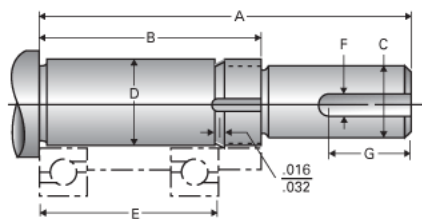


Type 3L, End Code 20

Call 800-321-7800 or visit us online at www.nookindustries.com to configure and order your Type 3L, End Code 20 today!



Product Info

Nominal Bearing Journal Size

20

Dimensions

C Maximum [in]	0.625
C Minimum [in]	0.624
D Maximum [in]	0.7877
D Minimum [in]	0.7873
F [in]	0.19
G [in]	1.00
Typical Journal for Single Bearing A [in]	4.03
Typical Journal for Single Bearing B [in]	2.71
Typical Journal for Single Bearing E [in]	2.204
Lock Nut	N-04
Lock Washer	W-04