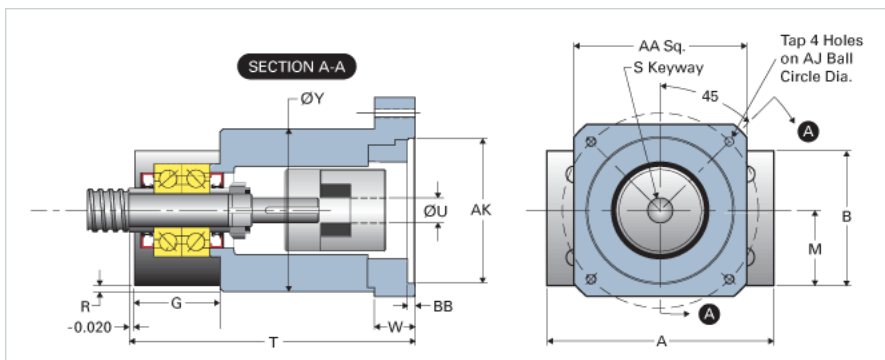
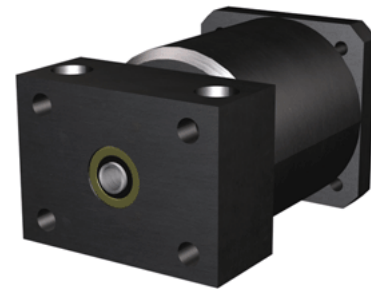


## EZZE-MOUNT EZM-1009-23

Call 800-321-7800 or visit us online at [www.nookindustries.com](http://www.nookindustries.com) to configure and order your EZZE-MOUNT EZM-1009-23 today!



### Product Info

|                                   |             |
|-----------------------------------|-------------|
| Part Number                       | EZM-1009-23 |
| Reference Code                    | U2          |
| Machined End Code                 | 9           |
| Nema Frame Reference              | 23          |
| Nominal Bearing Journal Size [mm] | 9           |

### Dimensions

|                               |          |
|-------------------------------|----------|
| A [in]                        | 2.75     |
| AA [in]                       | 2.50     |
| AJ [in]                       | 2.625    |
| AK Maximum [in]               | 1.506    |
| AK Minimum [in]               | 1.503    |
| B [in]                        | 2.00     |
| BB [in]                       | 0.19     |
| [in]                          | 2.00     |
| D [in]                        | 2.38     |
| E [in]                        | 1.38     |
| F [in]                        | 0.31     |
| G [in]                        | 1.19     |
| H [in]                        | 0.56     |
| J [in]                        | 0.56     |
| K Shaft Diameter Maximum [in] | 0.250    |
| K Shaft Diameter Minimum [in] | 0.249    |
| L Holes [Number of Holes]     | 4        |
| L Thru [in]                   | 0.028    |
| M [in]                        | 1.000    |
| N                             | -        |
| Q [in]                        | 0.38     |
| R [in]                        | 0.26     |
| S [in]                        | 0.125    |
| T [in]                        | 4.10     |
| U [in]                        | 0.38     |
| W [in]                        | 0.38     |
| Y [in]                        | 2.50     |
| P - Bolt Count                | 2        |
| P - Bolt Size                 | 5/16 x 2 |
| P - C'Bore [in]               | 0.50     |
| P - P1 [in]                   | 0.56     |
| P - Thru [in]                 | 0.34     |
| TAP                           | #10-32   |