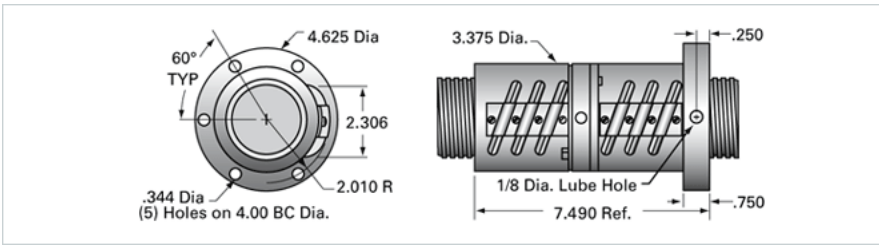


## PowerTrac SAR 2500 - 0250 RH, Preloaded, Flanged

Call 800-321-7800 or visit us online at [www.nookindustries.com](http://www.nookindustries.com) to configure and order your PowerTrac SAR 2500 - 0250 RH, Preloaded, Flanged today!



### Product Info

Ball Nut Number	SAR3242
Thread Direction	RH

### Details

Ball Circle Diameter [in]	2.500
Lead [in]	0.250
Nominal Ball Diameter [in]	0.156
Root diameter [in]	2.320

### Forces and Torques

Torque to Raise 1 lb. [in-lb]	0.044
-------------------------------	-------

### Flange Part Numbers

Flange Part Number	INTEGRAL
--------------------	----------

### Wiper Part Numbers

Wiper Kit Part Number	BRUSH
-----------------------	-------

### Weight

Nut Weight [lb]	9.90
-----------------	------

### Performance Specifications

Lead Accuracy +/- [in./ft.]	0.004
Maximum Adjustable Preload [lb]	1895
Spring Rate x 10 <sup>6</sup> [lb./in.]	
Dynamic Load [lb]	6315
Static Load [lb]	81938