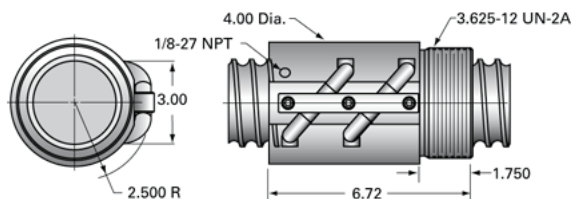


PowerTrac SBN 2500 - 0500 RH, Double Circuit

Call 800-321-7800 or visit us online at www.nookindustries.com to configure and order your PowerTrac SBN 2500 - 0500 RH, Double Circuit today!



Product Info

| | |
|------------------|----------|
| Ball Nut Number | SBN10316 |
| Thread Direction | RH |

Details

| | |
|----------------------------|-------|
| Ball Circle Diameter [in] | 2.500 |
| Lead [in] | 0.500 |
| Nominal Ball Diameter [in] | 0.375 |
| Root diameter [in] | 2.116 |

Dimensions

A [in]

Forces and Torques

| | |
|-------------------------------|-------|
| Torque to Raise 1 lb. [in-lb] | 0.088 |
|-------------------------------|-------|

Flange Part Numbers

| | |
|--------------------|-------|
| Flange Part Number | 70600 |
|--------------------|-------|

Wiper Part Numbers

| | |
|----------------------------|---|
| Wiper Kit Part Number | - |
| Wiper Kit Felt Part Number | - |

Weight

| | |
|-----------------|-------|
| Nut Weight [lb] | 12.70 |
|-----------------|-------|

Performance Specifications

| | |
|---|--------|
| Lead Accuracy +/- [in./ft.] | 0.004 |
| Maximum Adjustable Preload [lb] | |
| Spring Rate x 10 ⁶ [lb./in.] | |
| Dynamic Load [lb] | 21200 |
| Static Load [lb] | 186000 |