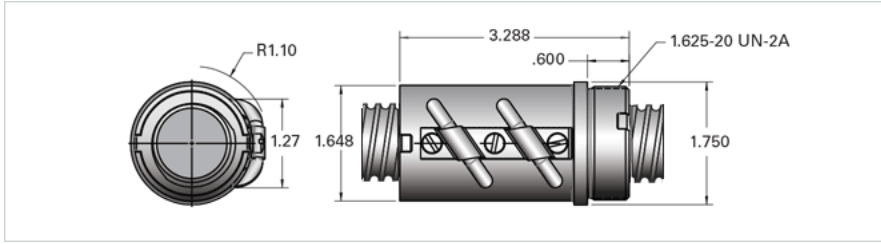


PowerTrac SBN 1250 - 0200 LH, Double Circuit

Call 800-321-7800 or visit us online at www.nookindustries.com to configure and order your PowerTrac SBN 1250 - 0200 LH, Double Circuit today!



Product Info

Ball Nut Number	SBN10189
Thread Direction	LH

Details

Ball Circle Diameter [in]	1.250
Lead [in]	0.200
Nominal Ball Diameter [in]	0.125
Root diameter [in]	1.115

Dimensions

A [in]

Forces and Torques

Torque to Raise 1 lb. [in-lb]	0.035
-------------------------------	-------

Flange Part Numbers

Flange Part Number	FLG8283
--------------------	---------

Wiper Part Numbers

Wiper Kit Part Number	ELASTOMER
Wiper Kit Felt Part Number	

Weight

Nut Weight [lb]	1.80
-----------------	------

Performance Specifications

Lead Accuracy +/- [in./ft.]	0.004
Maximum Adjustable Preload [lb]	
Spring Rate x 10 ⁶ [lb./in.]	
Dynamic Load [lb]	3336
Static Load [lb]	34688