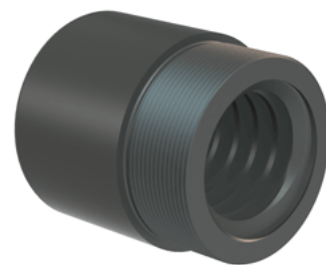


## Plastic Trapezoidal Nut 30905

Call 800-321-7800 or visit us online at [www.nookindustries.com](http://www.nookindustries.com) to configure and order your Plastic Trapezoidal Nut 30905 today!



| Product Info                 |           |
|------------------------------|-----------|
| Part Number                  | 30905     |
| Thread Direction             | RH        |
| Type                         | Plastic   |
| Details                      |           |
| Diameter                     | 40        |
| Lead [mm]                    | 7         |
| Starts                       | 1         |
| Pitch [mm]                   | 7         |
| Lash (Maximum Axial in) [mm] | 0.32      |
| Nominal Rod Diameter         | 40        |
| Thread Code                  | 905       |
| Dimensions                   |           |
| B [mm]                       | 60.0      |
| C [mm]                       | 60.0      |
| E [mm]                       | 20.00     |
| F (n) Dia. [mm]              | (4) 11.00 |
| F BCD [mm]                   | 90.00     |
| G [mm]                       | 21.0      |
| H [mm]                       | 120.0     |
| J [mm]                       | M55.15    |
| Forces and Torques           |           |
| Torque to Raise 1 kN [Nm]    | 3.022     |
| Flange Part Numbers          |           |
| Flange Part Number           | 72005     |
| Weight                       |           |
| Flange Weight [kg]           | 1.40      |
| Nut Weight [g]               | 160       |
| Performance Specifications   |           |
| Efficiency [%]               | 37        |
| Lead Accuracy +/- [m/25mm]   | 6.25      |
| Dynamic Load Capacity [N]    | 27580     |
| Static Load Capacity [N]     | 27580     |