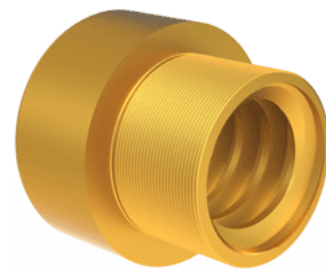
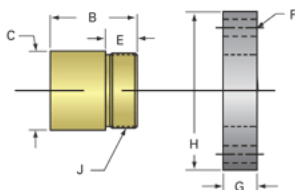


Bronze Trapezoidal Nut 20906

Call 800-321-7800 or visit us online at www.nookindustries.com to configure and order your Bronze Trapezoidal Nut 20906 today!



Product Info

Part Number	20906
Thread Direction	RH
Type	Bronze

Details

Diameter	55
Lead [mm]	12
Starts	1
Pitch [mm]	12
Lash (Maximum Axial in) [mm]	0.42
Nominal Rod Diameter	55
Thread Code	906

Dimensions

B [mm]	75.0
C [mm]	80.0
E [mm]	25.00
F (n) Dia. [mm]	(4) 17.00
F BCD [mm]	112.00
G [mm]	26.0
H [mm]	142.0
J [mm]	M72x2

Forces and Torques

Torque to Raise 1 kN [Nm]	5.131
---------------------------	-------

Flange Part Numbers

Flange Part Number	72006
--------------------	-------

Weight

Flange Weight [kg]	2.20
Nut Weight [g]	1900

Performance Specifications

Efficiency [%]	37
Lead Accuracy +/- [mm/25mm]	6.25
Dynamic Load Capacity [N]	104287
Static Load Capacity [N]	333718