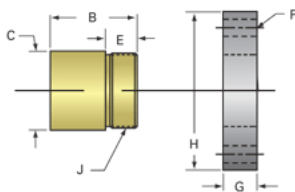
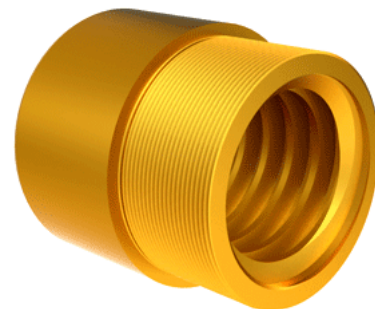


Bronze Acme Nut 3"-2 RH

Call 800-321-7800 or visit us online at www.nookindustries.com to configure and order your Bronze Acme Nut 3"-2 RH today!



Product Info	
Part Number	20302
Thread Direction	RH
Type	Bronze
Details	
Lead [in]	0.500
Starts	1
Pitch [in]	0.500
Turns Per Inch	2
Lash (Maximum Axial) [in]	0.016
Nominal Rod Diameter [in]	3.000
Threads per Inch	2
Thread Code	302
Form	2C
Dimensions	
B [in]	4.00
C [in]	4.00
E [in]	1.75
F (n) Dia. [in]	(6) .656
F BCD [in]	5.000
G [in]	1.78
H [in]	6.00
J [in]	3.625-12
Forces and Torques	
Torque to Raise 1 lb. [in-lb]	0.265
Flange Part Numbers	
Flange No-Lash Part Number	73302
Flange Part Number	70600
Weight	
Flange Weight [lb]	13.83
Nut Weight [lb]	7.85
Performance Specifications	
Efficiency [%]	30
Lead Accuracy +/- [in/in]	0.0006
Dynamic Load Capacity [lb]	45000
Static Load Capacity [lb]	144000