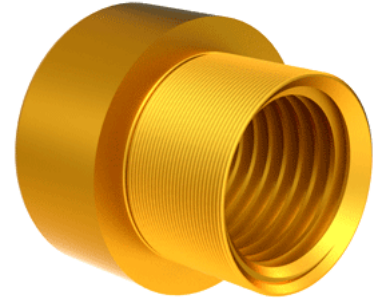


Bronze Acme Nut 2 1/4"-4 RH

Call 800-321-7800 or visit us online at www.nookindustries.com to configure and order your Bronze Acme Nut 2 1/4"-4 RH today!



Product Info

Part Number	20224
Thread Direction	RH
Type	Bronze

Details

Lead [in]	0.250
Starts	1
Pitch [in]	0.250
Turns Per Inch	4
Lash (Maximum Axial) [in]	0.012
Nominal Rod Diameter [in]	2.250
Threads per Inch	4
Thread Code	224
Form	2C

Dimensions

B [in]	3.06
C [in]	3.38
E [in]	1.56
F (n) Dia. [in]	(6) .656
F BCD [in]	4.380
G [in]	1.58
H [in]	5.38
J [in]	3.137-12

Forces and Torques

Torque to Raise 1 lb. [in-lb]	0.181
-------------------------------	-------

Flange Part Numbers

Flange No-Lash Part Number	73540
Flange Part Number	FLG7574

Weight

Flange Weight [lb]	9.88
Nut Weight [lb]	4.98

Performance Specifications

Efficiency [%]	22
Lead Accuracy +/- [in/in]	0.0003
Dynamic Load Capacity [lb]	25312
Static Load Capacity [lb]	81000