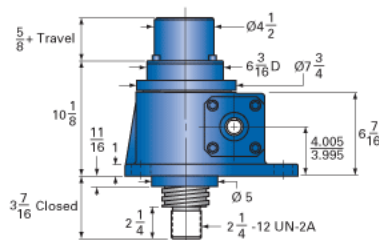
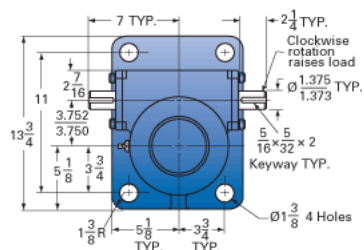
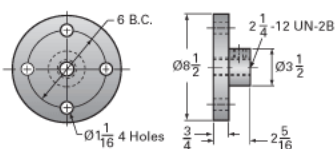


ActionJac 30-MSJ-IK 32:1

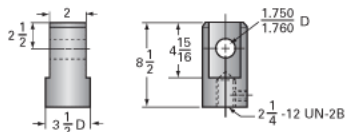
Call 800-321-7800 or visit us online at www.nookindustries.com to configure and order your ActionJac 30-MSJ-IK 32:1 today!



Top Plate (optional): 9000-00-07



Clevis End (optional): 9001-00-08



Details

Capacity [Ton]	30
Gear Ratio	32:1
Turns of Worm per Inch Travel	48
Torque to Raise 1 lb. [in-lb]	0.0270
Lifting Screw Diameter [in]	3.38
Screw Lead [in]	0.667
Root Diameter [in]	2.652
Tare Drag Torque [in-lb]	50

Performance Specifications

Maximum Allowable Input [hp]	3.50
Maximum Input Torque [in-lb]	1411
Maximum Worm Speed at Rated Load [rpm]	136
Maximum Load at 1750 RPM [lb]	4668
Starting Torque	2 x Running Torque

Weight

Base 0 Travel [lb]	145
Per Inch of Travel [lb]	2.90
Grease [lb]	1.5