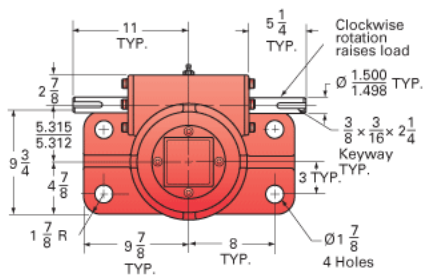
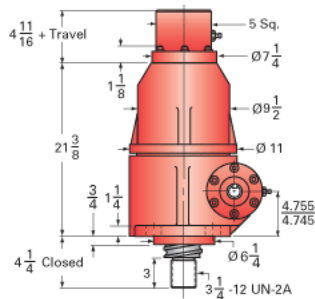
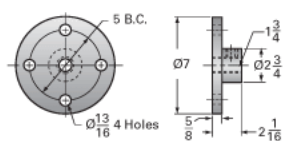


## ActionJac 50-BSJ-IK 32:1

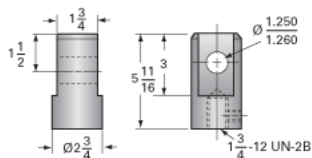
Call 800-321-7800 or visit us online at [www.nookindustries.com](http://www.nookindustries.com) to configure and order your ActionJac 50-BSJ-IK 32:1 today!



Top Plate (optional): 9000-00-06



Clevis End (optional): 9001-00-06



### Details

|                                  |        |
|----------------------------------|--------|
| Capacity [Ton]                   | 50     |
| Gear Ratio                       | 32:1   |
| Turns of Worm per Inch Travel    | 32     |
| Torque to Raise 1 lb. [in-lb]    | 0.0152 |
| Lifting Screw Diameter [in]      | 4.00   |
| Screw Lead [in]                  | 1.000  |
| Root Diameter [in]               | 3.338  |
| BackDrive Holding Torque [ft-lb] | 10.0   |
| Tare Drag Torque [in-lb]         | 90     |

### Performance Specifications

|  |                      |
|--|----------------------|
| Maximum Allowable Input [hp]           | 5.00                 |
| Maximum Input Torque [in-lb]           | 1390                 |
| Maximum Worm Speed at Rated Load [rpm] | 207                  |
| Maximum Load at 1750 RPM [lb]          | 11847                |
| Starting Torque                        | 1.5 x Running Torque |

### Weight

|                         |      |
|-------------------------|------|
| Base 0 Travel [lb]      | 490  |
| Per Inch of Travel [lb] | 5.00 |
| Grease [lb]             | 5.0  |