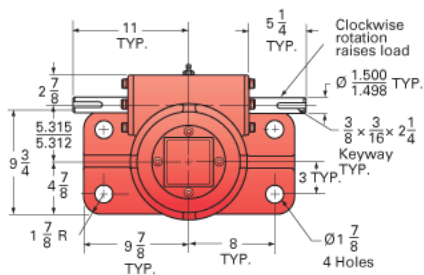
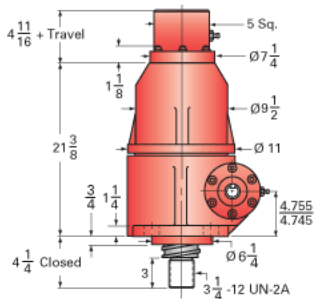
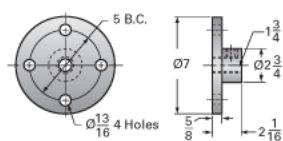


ActionJac 50-BSJ-IK 10 2/3:1

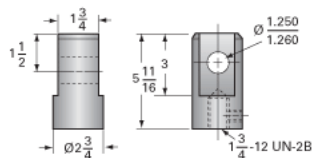
Call 800-321-7800 or visit us online at www.nookindustries.com to configure and order your ActionJac 50-BSJ-IK 10 2/3:1 today!



Top Plate (optional): 9000-00-06



Clevis End (optional): 9001-00-06



Details

Capacity [Ton]	50
Gear Ratio	10 2/3:1
Turns of Worm per Inch Travel	10.66
Torque to Raise 1 lb. [in-lb]	0.0281
Lifting Screw Diameter [in]	4.00
Screw Lead [in]	1.000
Root Diameter [in]	3.338
BackDrive Holding Torque [ft-lb]	40.0
Tare Drag Torque [in-lb]	90

Performance Specifications

Maximum Allowable Input [hp]	16.00
Maximum Input Torque [in-lb]	2560
Maximum Worm Speed at Rated Load [rpm]	359
Maximum Load at 1750 RPM [lb]	20506
Starting Torque	1.5 x Running Torque

Weight

Base 0 Travel [lb]	490
Per Inch of Travel [lb]	5.00
Grease [lb]	5.0