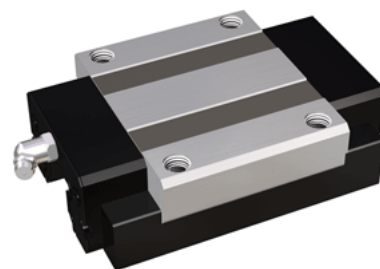
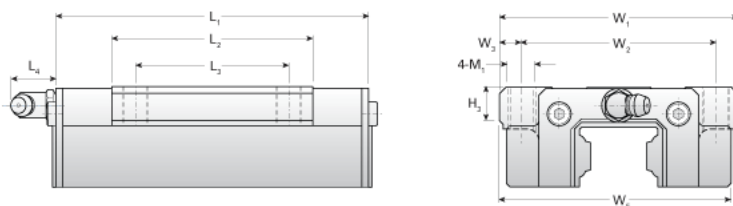


NH35TA

Call 800-321-7800 or visit us online at www.nookindustries.com to configure and order your NH35TA today!



Details

Size [mm]	35
-----------	----

Dimensions

L1 [mm]	128
L2 [mm]	80
L3 [mm]	62
L4 [mm]	12
M1 x l	M10X16
H3 [mm]	13
W1 [mm]	100
W2 [mm]	82
W3 [mm]	9
W5 [mm]	92

Forces and Torques

Basic Load Ratings C [kN]	37.55
Basic Load Ratings C [lbf]	8441
Basic Load Ratings C0 [kN]	62.55
Basic Load Ratings C0 [lbf]	14061
Static Moment Ratings-Ma [kN-m]	0.64
Static Moment Ratings-Ma [lb-in]	5642
Static Moment Ratings-Mb [kN-m]	0.64
Static Moment Ratings-Mb [lb-in]	5642
Static Moment Ratings-Mc [kN-m]	1.13
Static Moment Ratings-Mc [lb-in]	9982

Weight

Weight-Block [kg]	1.5
-------------------	-----

Grease Fitting

Grease Fitting Part Number	B-M6F
----------------------------	-------