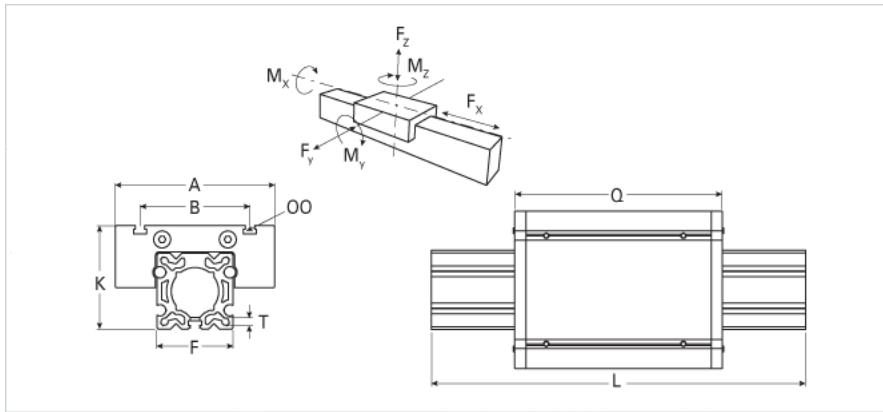
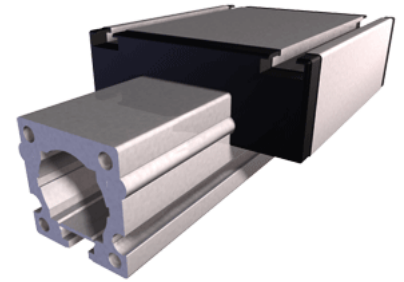


ER 40

Call 800-321-7800 or visit us online at www.nookindustries.com to configure and order your ER 40 today!



Details

Size 40

Dimensions

Basic Length L [mm]	125
A [mm]	100
B [mm]	66
F [mm]	29
G [mm]	-
H [mm]	-
J	M6-M10
K [mm]	55
MM	-
OO	M6
Q [mm]	122
T-Diameter	M5

Forces and Torques

Fx dynamic [N]	-
Fy dynamic [N]	700
Fz dynamic [N]	650
Mx dynamic [Nm]	20
My dynamic [Nm]	18
Mz dynamic [Nm]	25
Fx static [N]	-
Fy static [N]	1200
Fz static [N]	900
Mx static [Nm]	25
My static [Nm]	32
Mz static [Nm]	35

Geometrical moments of inertia of aluminum profile

Elastic modulus [N/mm ²]	70000
Ix [mm ⁴]	132000
Iy [mm ⁴]	134000

Weight

Additional Weight per 100 mm [kg]	0.23
Basic Weight [kg]	0.7