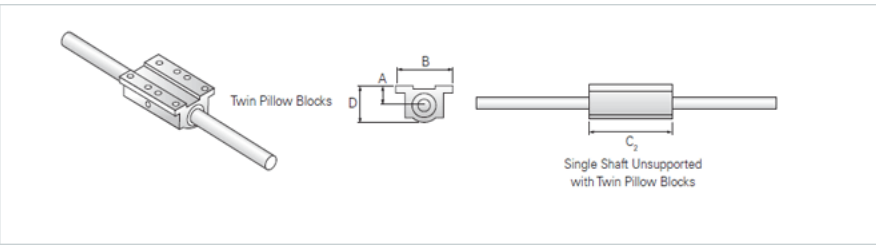
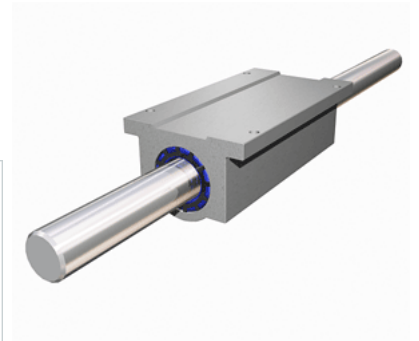


## PowerTrax 111-16-TXX

Call 800-321-7800 or visit us online at [www.nookindustries.com](http://www.nookindustries.com) to configure and order your PowerTrax 111-16-TXX today!



### Product Info

Nominal Shaft Diameter [in]	1.00
Pillow Block	TEP-16

### Dimensions

A +/-0.001 [in]	1.187
B [in]	3.25
C2 [in]	6.00
D [in]	2.19

### Performance Specifications

Load Maximum/Block [lbf]	1450
--------------------------	------