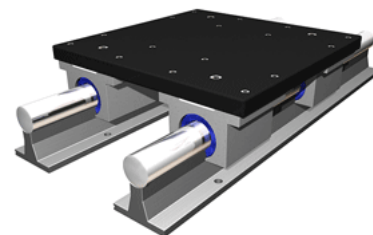
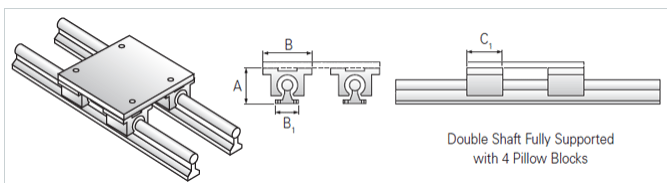


PowerTrax 133-16-SXX

Call 800-321-7800 or visit us online at www.nookindustries.com to configure and order your PowerTrax 133-16-SXX today!



Product Info

| | |
|-----------------------------|------------|
| Nominal Shaft Diameter [in] | 1.00 |
| Pillow Block | XEP-16-OPN |

Dimensions

| | |
|-----------------|-------|
| A +/-0.003 [in] | 2.937 |
| B1 [in] | 2.13 |
| B2 [in] | 5.50 |
| C1 [in] | 2.63 |

Performance Specifications

| | |
|--------------------------|------|
| Load Maximum/Block [lbf] | 2844 |
|--------------------------|------|