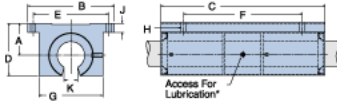
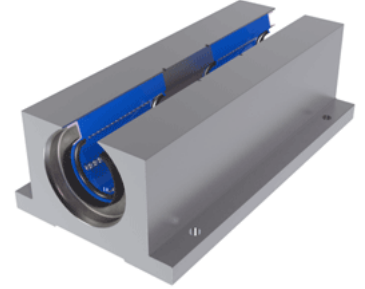


Excel TEP-24-OPN

Call 800-321-7800 or visit us online at www.nookindustries.com to configure and order your Excel TEP-24-OPN today!



* Lubrication holes for blocks up to 1/2" have flush lube fitting; 5/8" and above are 1/4 - 28 tapped hole with set screw



Product Info

Nominal Shaft Diameter [in]	1 ¹ / ₂
Part Number	TEP-24-OPN

Dimensions

A +/-0.001 [in]	1.750
B [in]	4 ³ / ₄
C [in]	9
D [in]	2 ²² / ₂₅
E +/-0.005 [in]	4.125
F +/-0.005 [in]	6.500
G [in]	3 ¹ / ₂
J [in]	¹ / ₂
K [in]	³ / ₄
H - Bolt	1/4"
H - Hole [in]	0.28

Weight

Weight [lb]	6.7
-------------	-----

Performance Specifications

Dynamic Load Maximum [lb]	2692
Dynamic Load Normal [lb]	2614
Static Load Maximum [lb]	1942
Static Load Normal [lb]	1734