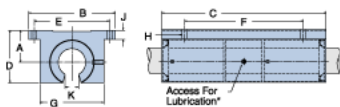
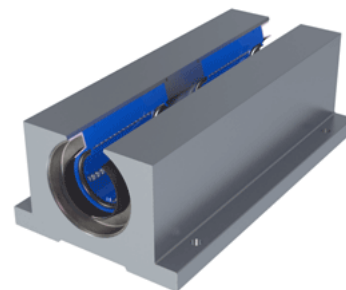


Excel TEP-20-OPN

Call 800-321-7800 or visit us online at www.nookindustries.com to configure and order your Excel TEP-20-OPN today!



* Lubrication holes for blocks up to 1/2" have flush lube fitting; 5/8" and above are 1/4 - 28 tapped hole with set screw



Product Info

Nominal Shaft Diameter [in]	1 ¹ / ₄
Part Number	TEP-20-OPN

Dimensions

A +/-0.001 [in]	1.500
B [in]	4
C [in]	7 ¹ / ₂
D [in]	2 ¹ / ₂
E +/-0.005 [in]	3.500
F +/-0.005 [in]	5.500
G [in]	3
J [in]	7 ¹⁶ / ₃₂
K [in]	5 ^{8/₁₆}
H - Bolt	#10
H - Hole [in]	0.22

Weight

Weight [lb]	4.2
-------------	-----

Performance Specifications

Dynamic Load Maximum [lb]	2112
Dynamic Load Normal [lb]	2050
Static Load Maximum [lb]	1626
Static Load Normal [lb]	1452