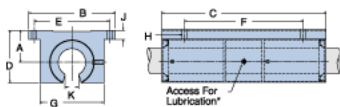
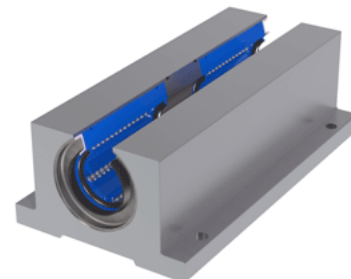


Excel TEP-16-OPN

Call 800-321-7800 or visit us online at www.nookindustries.com to configure and order your Excel TEP-16-OPN today!



* Lubrication holes for blocks up to 1/2" have flush lube fitting; 5/8" and above are 1/4 - 28 tapped hole with set screw



Product Info

Nominal Shaft Diameter [in]	1
Part Number	TEP-16-OPN

Dimensions

A +/-0.001 [in]	1.187
B [in]	$3 \frac{1}{4}$
C [in]	6
D [in]	$1 \frac{47}{50}$
E +/-0.005 [in]	2.875
F +/-0.005 [in]	4.500
G [in]	$2 \frac{3}{8}$
J [in]	$3 \frac{3}{8}$
K [in]	$9 \frac{1}{16}$
H - Bolt	#10
H - Hole [in]	0.22

Weight

Weight [lb]	2
-------------	---

Performance Specifications

Dynamic Load Maximum [lb]	1422
Dynamic Load Normal [lb]	1380
Static Load Maximum [lb]	1122
Static Load Normal [lb]	1002