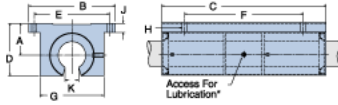
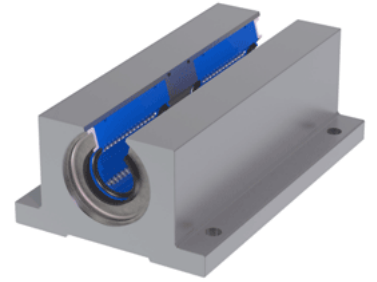


## Excel TEP-10-OPN

Call 800-321-7800 or visit us online at [www.nookindustries.com](http://www.nookindustries.com) to configure and order your Excel TEP-10-OPN today!



\* Lubrication holes for blocks up to 1/2" have flush lube fitting; 5/8" and above are 1/4 - 28 tapped hole with set screw



### Product Info

Nominal Shaft Diameter [in]	$\frac{5}{8}$
Part Number	TEP-10-OPN

### Dimensions

A +/-0.001 [in]	0.875
B [in]	$2 \frac{1}{2}$
C [in]	4
D [in]	$1 \frac{11}{25}$
E +/-0.005 [in]	2.125
F +/-0.005 [in]	3.000
G [in]	$1 \frac{3}{4}$
J [in]	$\frac{9}{32}$
K [in]	$\frac{3}{8}$
H - Bolt	#8
H - Hole [in]	0.19

### Weight

Weight [lb]	0.8
-------------	-----

### Performance Specifications

Dynamic Load Maximum [lb]	636
Dynamic Load Normal [lb]	630
Static Load Maximum [lb]	472
Static Load Normal [lb]	458