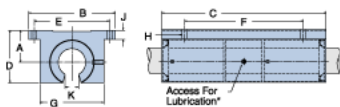
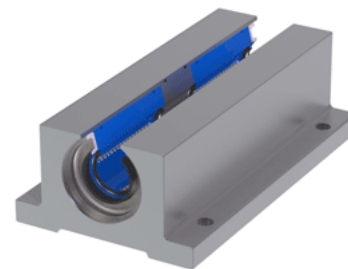


## Excel TEP-08-OPN

Call 800-321-7800 or visit us online at [www.nookindustries.com](http://www.nookindustries.com) to configure and order your Excel TEP-08-OPN today!



\* Lubrication holes for blocks up to 1/2" have flush lube fitting; 5/8" and above are 1/4 - 28 tapped hole with set screw



### Product Info

Nominal Shaft Diameter [in]	$1 \frac{1}{2}$
Part Number	TEP-08-OPN

### Dimensions

A +/-0.001 [in]	0.687
B [in]	2
C [in]	$3 \frac{1}{2}$
D [in]	$1 \frac{13}{100}$
E +/-0.005 [in]	1.688
F +/-0.005 [in]	2.500
G [in]	$1 \frac{3}{8}$
J [in]	$1 \frac{1}{4}$
K [in]	$5 \frac{1}{16}$
H - Bolt	#6
H - Hole [in]	0.17

### Weight

Weight [lb]	0.4
-------------	-----

### Performance Specifications

Dynamic Load Maximum [lb]	304
Dynamic Load Normal [lb]	304
Static Load Maximum [lb]	224
Static Load Normal [lb]	224