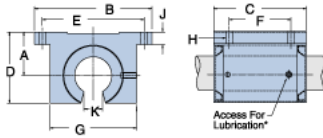
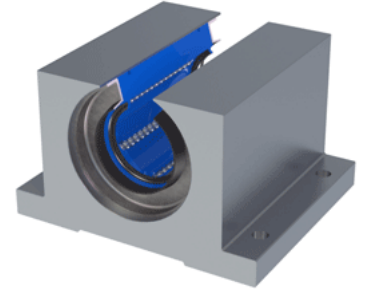


## Excel XEP-24-OPN

Call 800-321-7800 or visit us online at [www.nookindustries.com](http://www.nookindustries.com) to configure and order your Excel XEP-24-OPN today!



\* Lubrication holes for blocks up to 1/2" have flush lube fitting; 5/8" and above are 1/4 - 28 tapped hole with set screw



### Product Info

Nominal Shaft Diameter [in]	1 <sup>1</sup> / <sub>2</sub>
Part Number	XEP-24-OPN

### Dimensions

A +/-0.001 [in]	1.750
B [in]	4 <sup>3</sup> / <sub>4</sub>
C [in]	3 <sup>3</sup> / <sub>4</sub>
D [in]	2 <sup>7</sup> / <sub>8</sub>
E +/-0.005 [in]	4.125
F +/-0.005 [in]	2.500
G [in]	3 <sup>1</sup> / <sub>2</sub>
J [in]	1 <sup>1</sup> / <sub>2</sub>
K [in]	3 <sup>3</sup> / <sub>4</sub>
H - Bolt	1/4"
H - Hole [in]	0.28

### Weight

Weight [lb]	3.2
-------------	-----

### Performance Specifications

Dynamic Load Maximum [lb]	1346
Dynamic Load Normal [lb]	1307
Static Load Maximum [lb]	971
Static Load Normal [lb]	867