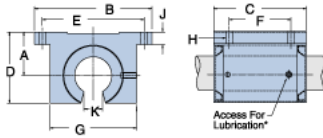
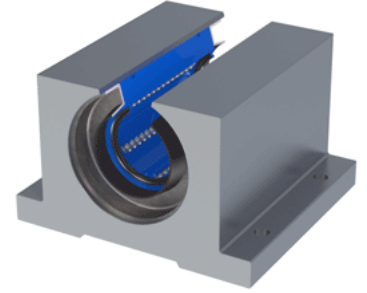


## Excel XEP-20-OPN

Call 800-321-7800 or visit us online at [www.nookindustries.com](http://www.nookindustries.com) to configure and order your Excel XEP-20-OPN today!



\* Lubrication holes for blocks up to 1/2" have flush lube fitting; 5/8" and above are 1/4 - 28 tapped hole with set screw



### Product Info

Nominal Shaft Diameter [in]	1 <sup>1</sup> / <sub>4</sub>
Part Number	XEP-20-OPN

### Dimensions

A +/-0.001 [in]	1.500
B [in]	4
C [in]	3 <sup>3</sup> / <sub>8</sub>
D [in]	2 <sup>1</sup> / <sub>2</sub>
E +/-0.005 [in]	3.500
F +/-0.005 [in]	2.000
G [in]	3
J [in]	7 <sup>7</sup> / <sub>16</sub>
K [in]	5 <sup>5</sup> / <sub>8</sub>
H - Bolt	#10
H - Hole [in]	0.22

### Weight

Weight [lb]	2.1
-------------	-----

### Performance Specifications

Dynamic Load Maximum [lb]	1056
Dynamic Load Normal [lb]	1025
Static Load Maximum [lb]	813
Static Load Normal [lb]	726