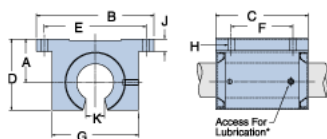
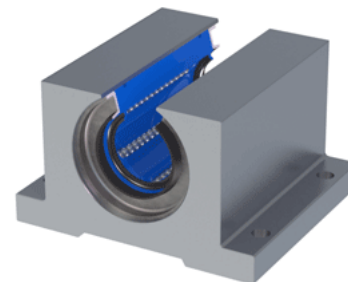


Excel XEP-16-OPN

Call 800-321-7800 or visit us online at www.nookindustries.com to configure and order your Excel XEP-16-OPN today!



* Lubrication holes for blocks up to 1/2" have flush lube fitting; 5/8" and above are 1/4 - 28 tapped hole with set screw

Product Info

Nominal Shaft Diameter [in]	1
Part Number	XEP-16-OPN

Dimensions

A +/-0.001 [in]	1.187
B [in]	3 ¹ / ₄
C [in]	2 ⁵ / ₈
D [in]	1 ¹⁵ / ₁₆
E +/-0.005 [in]	2.875
F +/-0.005 [in]	1.750
G [in]	2 ³ / ₈
J [in]	³ / ₈
K [in]	⁹ / ₁₆
H - Bolt	#10
H - Hole [in]	0.22

Weight

Weight [lb]	1
-------------	---

Performance Specifications

Dynamic Load Maximum [lb]	711
Dynamic Load Normal [lb]	690
Static Load Maximum [lb]	561
Static Load Normal [lb]	501