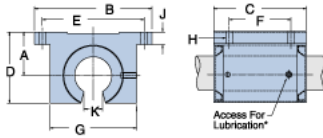
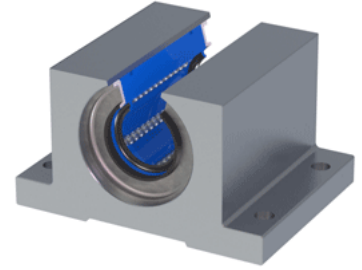


## Excel XEP-12-OPN

Call 800-321-7800 or visit us online at [www.nookindustries.com](http://www.nookindustries.com) to configure and order your Excel XEP-12-OPN today!



\* Lubrication holes for blocks up to 1/2" have flush lube fitting; 5/8" and above are 1/4" - 28 tapped hole with set screw

### Product Info

Nominal Shaft Diameter [in]	$\frac{3}{4}$
Part Number	XEP-12-OPN

### Dimensions

A +/-0.001 [in]	0.937
B [in]	$2 \frac{3}{4}$
C [in]	$1 \frac{7}{8}$
D [in]	$1 \frac{9}{16}$
E +/-0.005 [in]	2.375
F +/-0.005 [in]	1.250
G [in]	$1 \frac{7}{8}$
J [in]	$5 \frac{1}{16}$
K [in]	$7 \frac{1}{16}$
H - Bolt	#8
H - Hole [in]	0.19

### Weight

Weight [lb]	0.5
-------------	-----

### Performance Specifications

Dynamic Load Maximum [lb]	398
Dynamic Load Normal [lb]	386
Static Load Maximum [lb]	312
Static Load Normal [lb]	279