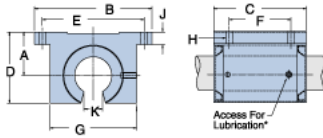
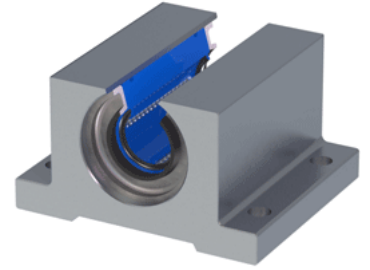


Excel XEP-08-OPN

Call 800-321-7800 or visit us online at www.nookindustries.com to configure and order your Excel XEP-08-OPN today!



* Lubrication holes for blocks up to 1/2" have flush lube fitting; 5/8" and above are 1/4" - 28 tapped hole with set screw



Product Info

Nominal Shaft Diameter [in]	$1 \frac{1}{2}$
Part Number	XEP-08-OPN

Dimensions

A +/-0.001 [in]	0.687
B [in]	2
C [in]	$1 \frac{1}{2}$
D [in]	$1 \frac{1}{8}$
E +/-0.005 [in]	1.688
F +/-0.005 [in]	1.000
G [in]	$1 \frac{3}{8}$
J [in]	$1 \frac{1}{4}$
K [in]	$5 \frac{1}{16}$
H - Bolt	#6
H - Hole [in]	0.17

Weight

Weight [lb]	0.2
-------------	-----

Performance Specifications

Dynamic Load Maximum [lb]	152
Dynamic Load Normal [lb]	152
Static Load Maximum [lb]	112
Static Load Normal [lb]	112