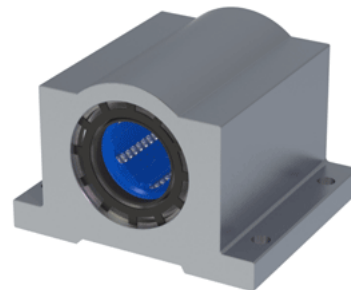
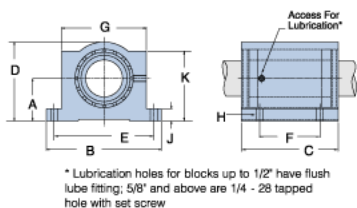


Excel XEP-16

Call 800-321-7800 or visit us online at www.nookindustries.com to configure and order your Excel XEP-16 today!



Product Info

Nominal Shaft Diameter [in]	1
Part Number	XEP-16

Dimensions

A +/-0.001 [in]	1.187
B [in]	$3 \frac{1}{4}$
C [in]	$2 \frac{13}{16}$
D [in]	$2 \frac{3}{16}$
E +/-0.005 [in]	2.875
F +/-0.005 [in]	1.750
G [in]	$2 \frac{3}{8}$
J [in]	$\frac{3}{8}$
K [in]	$1 \frac{15}{16}$
H - Bolt	#10
H - Hole [in]	0.22

Weight

Weight [lb]	1.2
-------------	-----

Performance Specifications

Dynamic Load Maximum [lb]	725
Dynamic Load Normal [lb]	684
Static Load Maximum [lb]	630
Static Load Normal [lb]	492