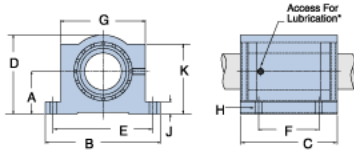
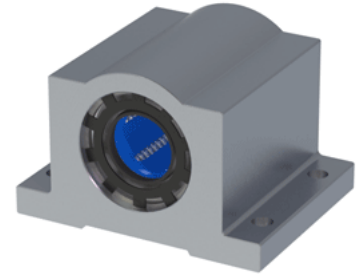


Excel XEP-10

Call 800-321-7800 or visit us online at www.nookindustries.com to configure and order your Excel XEP-10 today!



* Lubrication holes for blocks up to 1/2" have flush lube fitting; 5/8" and above are 1/4 - 28 tapped hole with set screw



Product Info

Nominal Shaft Diameter [in]	$\frac{5}{8}$ - $\frac{1}{2}$
Part Number	XEP-10

Dimensions

A +/-0.001 [in]	0.875
B [in]	$2 \frac{1}{2}$
C [in]	$1 \frac{15}{16}$ - $\frac{1}{2}$
D [in]	$1 \frac{5}{8}$ - $\frac{1}{2}$
E +/-0.005 [in]	2.125
F +/-0.005 [in]	1.125
G [in]	$1 \frac{3}{4}$ - $\frac{1}{2}$
J [in]	9 - $\frac{32}{32}$
K [in]	$1 \frac{7}{16}$ - $\frac{1}{2}$
H - Bolt	#8
H - Hole [in]	0.19

Weight

Weight [lb]	0.5
-------------	-----

Performance Specifications

Dynamic Load Maximum [lb]	325
Dynamic Load Normal [lb]	273
Static Load Maximum [lb]	273
Static Load Normal [lb]	187