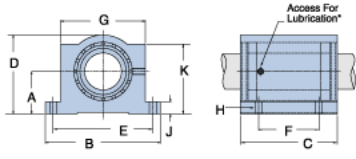
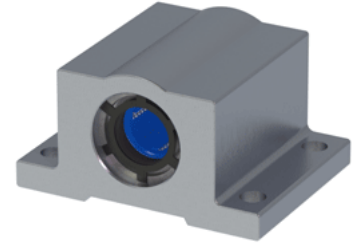


## Excel XEP-06

Call 800-321-7800 or visit us online at [www.nookindustries.com](http://www.nookindustries.com) to configure and order your Excel XEP-06 today!



\* Lubrication holes for blocks up to 1/2" have flush lube fitting; 5/8" and above are 1/4 - 28 tapped hole with set screw



### Product Info

Nominal Shaft Diameter [in]	$\frac{3}{8}$ "
Part Number	XEP-06

### Dimensions

A +/-0.001 [in]	0.500
B [in]	$1 \frac{3}{4}$
C [in]	$1 \frac{5}{16}$
D [in]	$1 \frac{15}{16}$
E +/-0.005 [in]	1.437
F +/-0.005 [in]	0.875
G [in]	$1 \frac{1}{8}$
J [in]	$1 \frac{3}{16}$
K [in]	$1 \frac{7}{8}$
H - Bolt	#6
H - Hole [in]	0.17

### Weight

Weight [lb]	0.12
-------------	------

### Performance Specifications

Dynamic Load Maximum [lb]	68
Dynamic Load Normal [lb]	59
Static Load Maximum [lb]	61
Static Load Normal [lb]	43