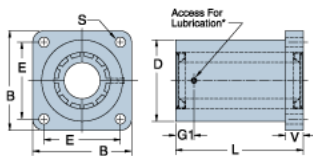
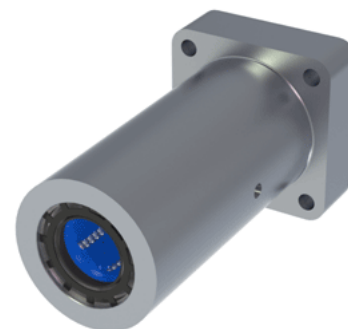


## Excel TEP-16-FLM

Call 800-321-7800 or visit us online at [www.nookindustries.com](http://www.nookindustries.com) to configure and order your Excel TEP-16-FLM today!



### Product Info

Nominal Shaft Diameter [in]	1
Part Number	TEP-16-FLM

### Dimensions

B [in]	2.75
D [in]	2.25
E +/-0.005 [in]	2.125
G1 [in]	2.70
L [in]	5.33
V [in]	0.90
S Hole Dia. [in]	0.28

### Performance Specifications

Dynamic Load Maximum [lb]	1450
Dynamic Load Normal [lb]	1368
Static Load Maximum [lb]	1260
Static Load Normal [lb]	984