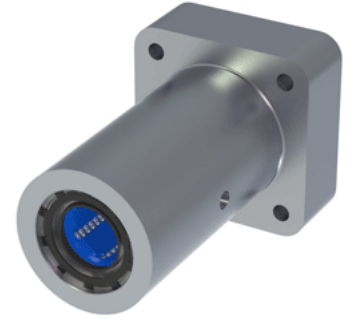
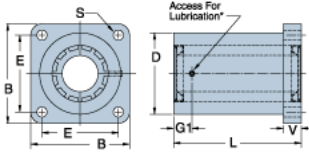


## Excel TEP-12-FLM

Call 800-321-7800 or visit us online at [www.nookindustries.com](http://www.nookindustries.com) to configure and order your Excel TEP-12-FLM today!



### Product Info

Nominal Shaft Diameter [in]	$\frac{3}{4}$
Part Number	TEP-12-FLM

### Dimensions

B [in]	2.38
D [in]	1.75
E +/-0.005 [in]	1.750
G1 [in]	1.60
L [in]	3.95
V [in]	0.90
S Hole Dia. [in]	0.22

### Performance Specifications

Dynamic Load Maximum [lb]	812
Dynamic Load Normal [lb]	766
Static Load Maximum [lb]	702
Static Load Normal [lb]	548