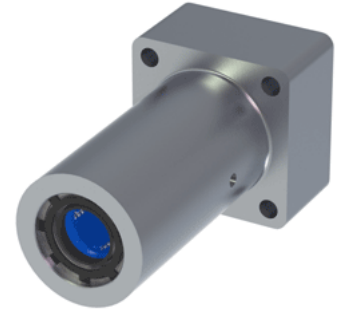
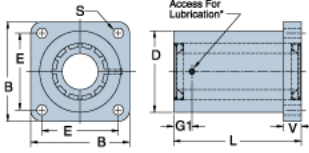


## Excel TEP-08-FLM

Call 800-321-7800 or visit us online at [www.nookindustries.com](http://www.nookindustries.com) to configure and order your Excel TEP-08-FLM today!



### Product Info

Nominal Shaft Diameter [in]	$\frac{1}{2}$
Part Number	TEP-08-FLM

### Dimensions

B [in]	1.63
D [in]	1.25
E +/-0.005 [in]	1.250
G1 [in]	1.60
L [in]	3.20
V [in]	0.90
S Hole Dia. [in]	0.19

### Performance Specifications

Dynamic Load Maximum [lb]	350
Dynamic Load Normal [lb]	304
Static Load Maximum [lb]	316
Static Load Normal [lb]	224