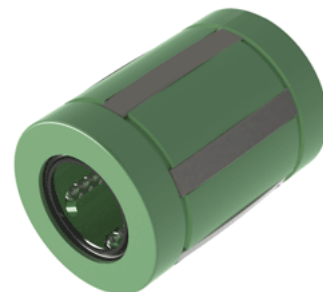
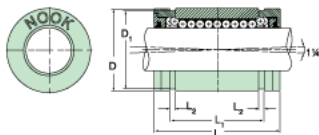


## Excel XLMC20UU

Call 800-321-7800 or visit us online at [www.nookindustries.com](http://www.nookindustries.com) to configure and order your Excel XLMC20UU today!



### Product Info

Nominal Shaft Diameter [mm]	20
Part Number	XLMC20UU

### Dimensions

D1 [mm]	30.3
L [mm]	45
L1 [mm]	31.3
L2 [mm]	1.65
Housing Bore Diameter D Maximum [mm]	32.10
Housing Bore Diameter D Minimum [mm]	32.05

### Performance Specifications

Number of Ball Circuits	5
Dynamic Load C Maximum [N]	1560
Dynamic Load C Normal [N]	1500
Static Load C [N]	1250