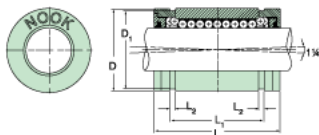
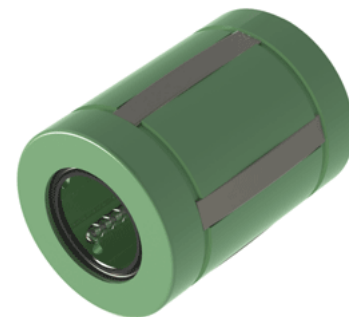


Excel XLMC16UU

Call 800-321-7800 or visit us online at www.nookindustries.com to configure and order your Excel XLMC16UU today!



Product Info

| | |
|-----------------------------|----------|
| Nominal Shaft Diameter [mm] | 16 |
| Part Number | XLMC16UU |

Dimensions

| | |
|--------------------------------------|-------|
| D1 [mm] | 24.9 |
| L [mm] | 36 |
| L1 [mm] | 24.7 |
| L2 [mm] | 1.35 |
| Housing Bore Diameter D Maximum [mm] | 26.10 |
| Housing Bore Diameter D Minimum [mm] | 26.03 |

Performance Specifications

| | |
|----------------------------|-----|
| Number of Ball Circuits | 5 |
| Dynamic Load C Maximum [N] | 920 |
| Dynamic Load C Normal [N] | 800 |
| Static Load C [N] | 630 |