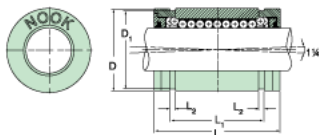
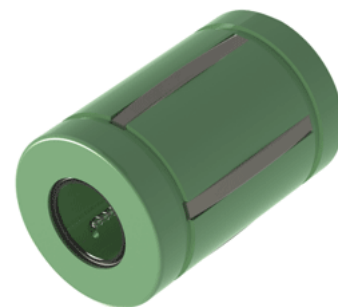


Excel XLMC10UU

Call 800-321-7800 or visit us online at www.nookindustries.com to configure and order your Excel XLMC10UU today!



Product Info

Nominal Shaft Diameter [mm]	10
Part Number	XLMC10UU

Dimensions

D1 [mm]	18
L [mm]	29
L1 [mm]	21.7
L2 [mm]	1.35
Housing Bore Diameter D Maximum [mm]	19.06
Housing Bore Diameter D Minimum [mm]	19.03

Performance Specifications

Number of Ball Circuits	5
Dynamic Load C Maximum [N]	575
Dynamic Load C Normal [N]	500
Static Load C [N]	390