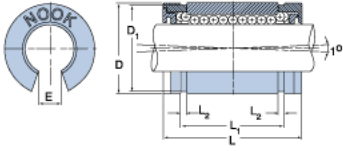
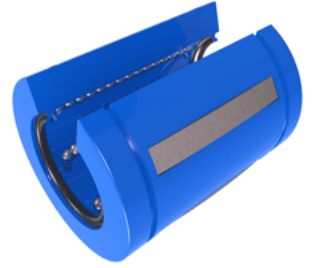


EXCEL XLEN24UU

Call 800-321-7800 or visit us online at www.nookindustries.com to configure and order your EXCEL XLEN24UU today!



Product Info

Nominal Shaft Diameter [in]	1 ¹ / ₂
Part Number	XLEN24UU

Dimensions

D1 [in]	2.2389
E [in]	0.75
L Maximum [in]	2.970
L Minimum [in]	3.000
L1 Maximum [in]	2.390
L1 Minimum [in]	2.410
L2 [in]	0.086
Housing Bore Diameter D Maximum [in]	2.3760
Housing Bore Diameter D Minimum [in]	2.3750

Performance Specifications

Dynamic Load Maximum [lb]	1346
Dynamic Load Normal [lb]	1307
Number of Ball Circuits	5
Static Load Maximum [lb]	971
Static Load Normal [lb]	867