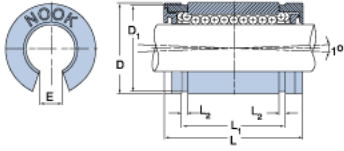
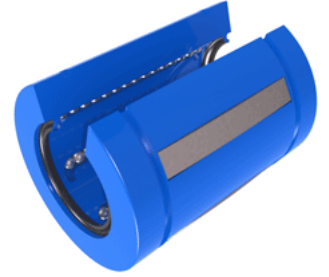


EXCEL XLEN20UU

Call 800-321-7800 or visit us online at www.nookindustries.com to configure and order your EXCEL XLEN20UU today!



Product Info

Nominal Shaft Diameter [in]	$1 \frac{1}{4}$
Part Number	XLEN20UU

Dimensions

D1 [in]	1.8890
E [in]	0.63
L Maximum [in]	2.600
L Minimum [in]	2.625
L1 Maximum [in]	1.984
L1 Minimum [in]	2.004
L2 [in]	0.086
Housing Bore Diameter D Maximum [in]	2.0008
Housing Bore Diameter D Minimum [in]	2.0000

Performance Specifications

Dynamic Load Maximum [lb]	1056
Dynamic Load Normal [lb]	1025
Number of Ball Circuits	5
Static Load Maximum [lb]	813
Static Load Normal [lb]	726