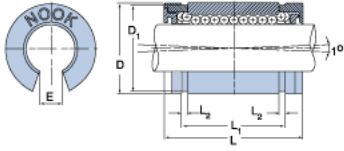
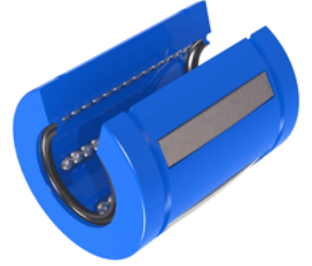


EXCEL XLEN12UU

Call 800-321-7800 or visit us online at www.nookindustries.com to configure and order your EXCEL XLEN12UU today!



Product Info

Nominal Shaft Diameter [in]	$\frac{3}{4}$
Part Number	XLEN12UU

Dimensions

D1 [in]	1.1760
E [in]	0.43
L Maximum [in]	1.605
L Minimum [in]	1.625
L1 Maximum [in]	1.250
L1 Minimum [in]	1.270
L2 [in]	0.056
Housing Bore Diameter D Maximum [in]	1.2505
Housing Bore Diameter D Minimum [in]	1.2500

Performance Specifications

Dynamic Load Maximum [lb]	398
Dynamic Load Normal [lb]	386
Number of Ball Circuits	5
Static Load Maximum [lb]	312
Static Load Normal [lb]	279