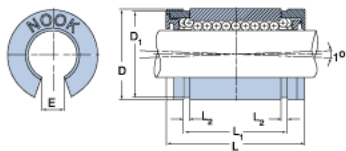
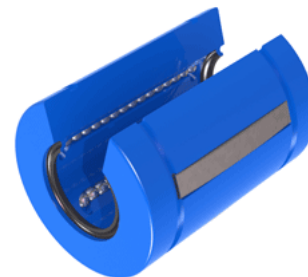


EXCEL XLEN10UU

Call 800-321-7800 or visit us online at www.nookindustries.com to configure and order your EXCEL XLEN10UU today!



Product Info

Nominal Shaft Diameter [in]	$\frac{5}{8}$
Part Number	XLEN10UU

Dimensions

D1 [in]	1.0700
E [in]	0.38
L Maximum [in]	1.480
L Minimum [in]	1.500
L1 Maximum [in]	1.095
L1 Minimum [in]	1.105
L2 [in]	0.056
Housing Bore Diameter D Maximum [in]	1.1255
Housing Bore Diameter D Minimum [in]	1.1250

Performance Specifications

Dynamic Load Maximum [lb]	318
Dynamic Load Normal [lb]	315
Number of Ball Circuits	4
Static Load Maximum [lb]	236
Static Load Normal [lb]	229